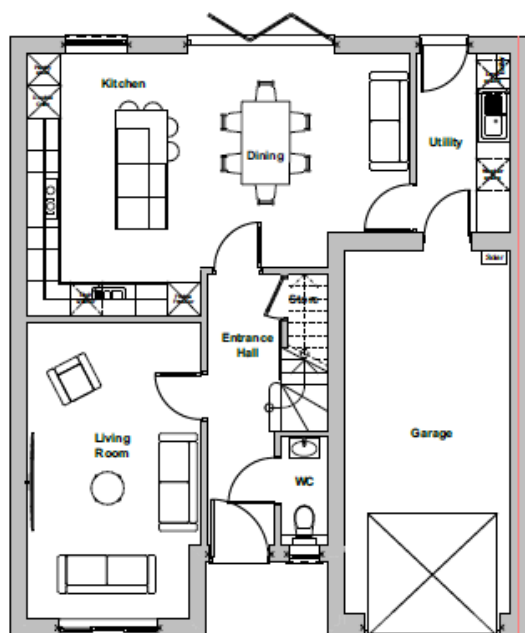




The Stamford

4 Bedroom Semi detached home with integral garage, dedicated home office and sociable family kitchen.

Ground Floor



Lounge	5485 x 3206	~	17'9" x 10'5"
Kitchen/ Dining	4852 x 7080	~	15'9" x 23'2"
Utility	1738 x 3300	~	5'7" x 10'8"
WC	2023 x 875	~	6'6" x 2'8"

First Floor

Bedroom 1	4482 x 3009	~	14'7" x 9'8"
En-suite	1926 x 3009	~	6'32" x 9'8"
Bedroom 2	4210 x 3051	~	13'8" x 10'0"
Bedroom 3	3835 x 3324	~	12'6" x 10'9"
Bedroom 4	4045 x 3050	~	13'2" x 10'0"
Home office	1987 x 2255	~	6'5" x 7'3"
Bathroom	2715 x 2531	~	8'9" x 8'3"



The floor plans depict a typical layout of this house type. For exact plot specification, details of external and internal finishes, dimensions and floor plan differences confirm prior to reservation with Cooper Lennard Homes. All dimensions are + or - 50mm and floor plans are not shown to scale. The kitchen layout and furniture positions are for indicative purposes only. The computer generated image is for illustrative purposes only and it is from an imaginary viewpoint within the development. Its purpose is to give a feel for the development, not an accurate description of each property. The illustration shows a typical Cooper Lennard home of this type, but there are, however, variances from site to site. External materials, finishes, landscaping and the position of driveways may vary throughout the development.

Properties may also be built handed (mirror image). All information is correct at the time of going to press, January 2025